

2008 MACK PINNACLE CHU613

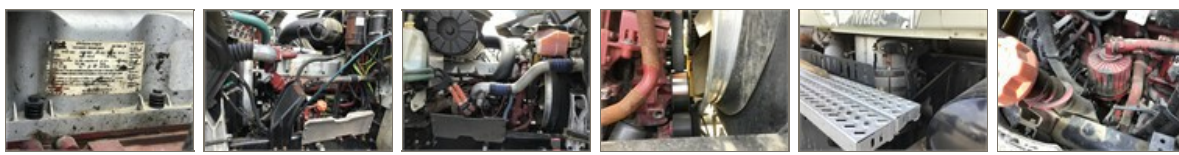
Year	VIN	Stock Number
2008	1M1AN07Y18N002579CT2579	

Drive	Mileage	Engine Type
6x4	317883	MP8 12.7L

Suspension	Tires	Location
Camelback	10	Equify TMs - Allen Williams 777 Main St. Fort Worth, Texas USA 76102



Engine		
Fuel Type	Select Fuel Type	Diesel
Starter	Good	
Hoses	New	Good
Engine Brake	NO	
Air Gauges	YES	
Air Leaks		
Oil Leaks	YES	Minor
Overdrive	YES	
Overhaul		
Coolant Leaks	NO	
Blow-By	No	
Diesel Particulate Filter (DPF)	Yes	
Engine Warranty		
Belts	Good	
Torque		
Electronic Engine Control	YES	
Emission Control Label	YES	
Overhaul Records		



Electrical

Fog Lights	NO
Interior Lights	Fair
Tail Lights	Excellent
Spotlight	YES No
Cab Accent Lights	NO
Bullet Lights	YES
Batteries	Good
Inverter	YES
Headlights	Excellent



Powertrain

Clutch	Good
Differential Lock	YES
Power Take Off	Good
Transmission Manufacturer	Maxitorque
Rear Differential	Good
Transmission	18 Spd
Transmission Condition	Good
Front Differential Ratio	
Transmission Model	T318



General Appearance Interior

Other Interior

Options

Tilt/Telescopic
Wheel

YES

Wrap Around Dash

YES

A/C

YES

Steering

Power

Interior

Good

Woodgrain Dash

YES

No Woodgrain Dash

Digital Display

YES

Air Ride Seats

Dual

High Back Seats

Dual

Sunroof

NO

Radio

Mack Radio

A/C Condition

Excellent

Heater

Excellent

Gauges

Standard



Hydraulics

Motors

Good

Hoses

Fair

Hydraulics Leak

YES

Behind Cab

Tank

New

Good

Pumps

Good



General Appearance

Power Mirrors	Other	Passenger Mirror Broke
Tank Fairing	NO	
Rear Window	YES	
Passenger Quarter Fender		
Air Horns	YES	
Air Cleaners	Other	
Air Shield / Fairing	NO	
Color	White	
Driver Side Fuel Tank	YES	
Bumper	Chrome	
Chrome Mirrors	YES	
Grill	Good	
Driver Quarter Fender		
Hood	New	Not new
Driver Quarter Panel	Good	Minor Scratches and Chips
Chrome Exhaust	NO	
Passenger Quarter Panel	Good	Minor Scratches and Chips
Physical Damages	Minor Chips in Windsheild, Front Bumper Minor Damage	
Visor	YES	
Exhaust	Dual	
Fuel Tank Type	Aluminum	
Passenger Side Fuel Tank	YES	
Daylight Doors		
Cab Extenders	NO	
Overall Glass Condition	Good	



Chassis

Rear Axle
Manufacturer

Rear Rear Brake %
Remaining

Suspension Spring

Front Axle Weight 12,000

Emergency Brake
Works YES

Front Tire %
Remaining

Gross Vehicle
Weight 50,000

Double Frame YES

Brake Lines Good

Wheels Aluminum/Steel

Rear Dual %
Remaining

Frame Steel

Tires 11R22.5 Front
 11R24.5 Rear

Front Rear Brake %
Remaining

Rear Axle Weight 38,000

Wheelbase 220"

Front Dual %
Remaining

Rust YES Minor

Front Axle Set Forward

Number of Rear
Axles Tandem

Tire Type Original

Brake Type Air

Front Brake %
Remaining

Lift Axle YES

